

IIoT MODULE

With EXPANDABLE and PROGRAMMABLE I/O



we151 **LTE**



we152 **Wi-Fi**

THE EXPANDABLE SOLUTIONS FOR THE IIoT

The programmable modules WE15X are the ideal products for the remote control and monitoring in the IIoT. Thanks to the Modbus RTU protocol on RS485, the devices of the WE15X series can manage a high number of additional inputs/outputs, beside those already available on board, using the expanders of the XP series. All signals collected from the field can be delivered to the Cloud offered by Nethix or any third party. The VPN (Standard Open VPN) is also supported and allows to access remotely any device, independently from the used connection.

Through programmable logics the WE15X devices allow to manage alarms and/or automated actions.

TWO MODELS - TWO CONNECTIVITIES

WE151 and WE152 differ in connectivity, all other features remain the same.

WE151

Communication on mobile network

Integrated LTE Modem

LTE (2600-2100-1800-900-850-800 MHz) /GSM (900-1800 MHz)

WE152

Communication on Wi-Fi network

Integrated Wi-Fi module

Wi-Fi: 2.4 GHz (b/g/n)

TECHNICAL SPECIFICATIONS

POWER SUPPLY	9-32 VDC
INPUTS	2 ANALOG INPUTS 0-5VDC / 0-10VDC / 0-20mA / 4-20 mA / NTC 4 DIGITAL INPUTS IN DRY CONTACT Mode: Counter On/Off Hour meter Flow meter
OUTPUTS	2 RELAIS OUTPUTS 1A 230Vac/30VDC
PORT	USB Type-C (only for configuration)
CONSUMPTION	average 500mA, peak 2A
DIMENSIONS (L X W X H)	70 x 65 x 90 mm
WEIGHT	150 g
WORKING TEMPERATURE	-15°C - +55°C
STORAGE TEMPERATURE	-25°C - +85°C
HUMIDITY	0% - 80% (non condensing)

MAIN FUNCTIONS

- Monitoring and control of Input/Output
- Integrated Web server
- Scheduler
- Remote upgrade of software
- Backup/restore of configuration
- Alarms via SMS/EMAIL/CHAT
- Commands via SMS/EMAIL/CHAT
- Real-time graphs
- Plug-in supported

- VPN
- Modbus RTU

APPLICAZIONI

- Smart systems
- Pump stations remote control
- Silos monitoring
- Water leak detection
- Water quality control
- Water lifting systems

- Weather monitoring
- Meter reading

DATA DELIVERY

- Nethix Cloud
- Email report
- Chat
- HTTP/HTTPS
- MQTT/MQTTS
- FTP/FTPS

MANAGE YOUR DEVICE THROUGH



WEB SERVER
Log through browser with no need of additional software

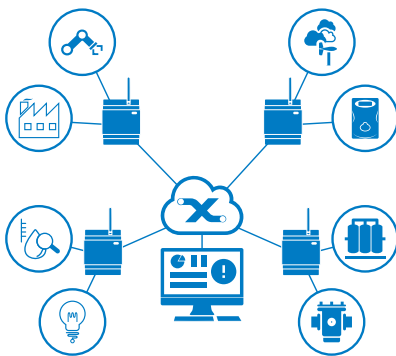


CHAT
Communicate from your smartphone

USE MODES

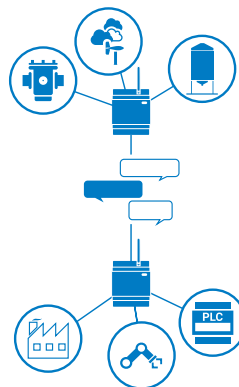
STANDALONE

Point-to-Point communication and data delivery from the machine to the Cloud/User



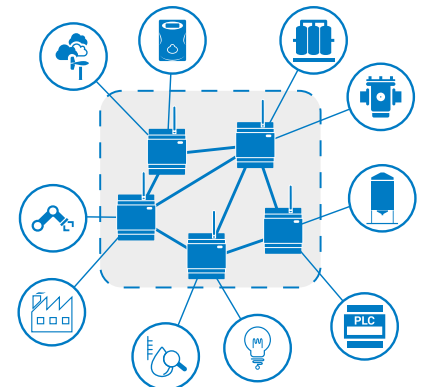
CLIENT/SERVER

Two or more devices communicate each other according to a client-server architecture.



MULTI NODE

The devices are nodes of a network, where the single nodes can communicate with each other thanks to MQTT protocol.



CODE	PRODUCT	DESCRIPTION
90.01.010	WE151	Module with LTE technology
90.01.020	WE152	Module with Wi-Fi technology
90.92.101	USB-A > USB-C Cable	Programming cable - 50cm