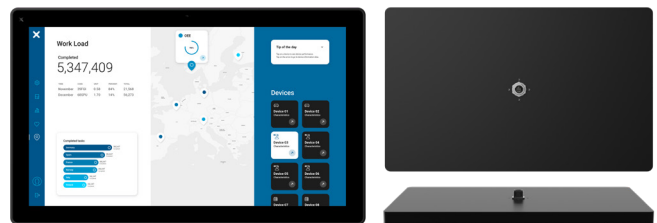
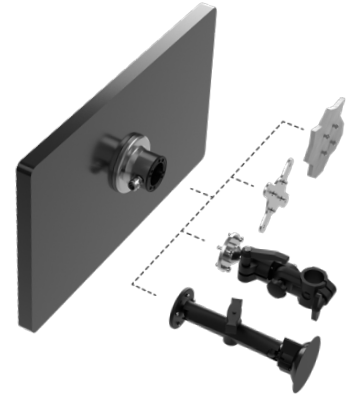


# JSmart721M Tech-Note

## 21.5" TFT, PCAP Touch, PoE Ethernet, Wi-Fi, NFC, JMobile runtime

- 21 inch screen, resolution 1920x1080 pixel
- PCAP Touchscreen Multitouch
- 10/100 Ethernet port PoE
- Wi-Fi Connection and NFC Device
- 64 bit quad core CPU
- Full IP protection; ideal for mounting-arm installation
- Operating temperature -20°C to +55°C
- UL 61010-1 approval
- Dedicated HMI support arm system
- Includes environment and motion sensors



## Highlights

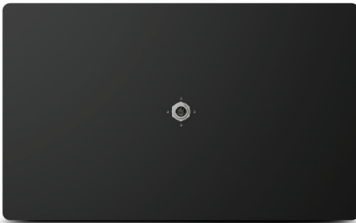
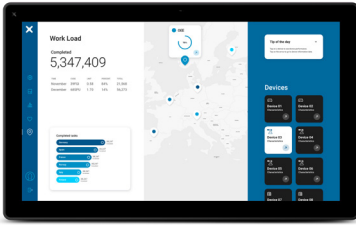
JSmart700M feature a powerful 64 bit quad core CPU that ensures JMobile applications are running in their optimal environment for the highest performance.

The special features of JSmart721M are the sleek and elegant design, the 21 inch multi-touch capacitive touchscreen display with robust glass front, and the ability to connect the device via a single Power-over-Ethernet (PoE) cable. This technology allows maximum flexibility and efficiency in installation as well as full IP67 protection with the use of appropriate accessories and connectors.

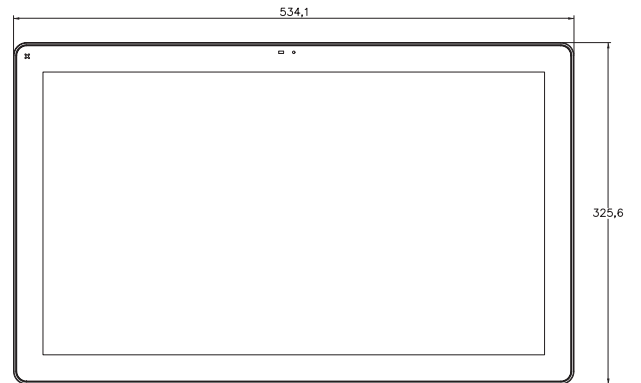
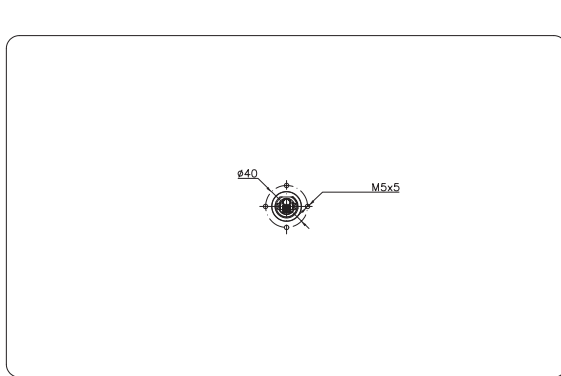
The Wi-Fi interface improves the integration capability of the device while NFC expands the possible applications.

JSmart700M is the ideal choice for the most demanding IIoT edge applications in factory, marine and building automation where powerful and performing HMI is needed for installation as close as possible to human operators.

# JSmart721M - Technical Data



| System Resources             |  |
|------------------------------|--|
| Display - Colors             | 21.5" TFT - 16M  |
| Resolution                   | 1920x1080  |
| Brightness                   | 400 cd/m <sup>2</sup>  |
| Dimming                      | Yes  |
| Touchscreen                  | Projected Capacitive, Multitouch                                     |
| CPU                          | 64-bit RISC Quad core - 1.6 GHz                                      |
| Operating System             | Linux  |
| Flash                        | 8 GB   |
| RAM                          | 2 GB   |
| FRAM                         | 64 KB  |
| Real Time Clock, RTC Back-up | Yes  |
| Interface                    |  |
| Ethernet port                | 10/100 PoE   |
| USB port                     | 1 (Host V2.0, max. 500 mA, available with special cable)             |
| LED                          | 1 RGB  |
| Sensors                      | Temperature, 3-Axis Accelerometer                                    |
| Buzzer                       | Yes  |
| NFC                          | ISO/IEC 14443A   |
| Wi-Fi                        | IEEE 802.11a/b/g   |
| Ratings                      |  |
| Power supply                 | IEEE 802.3bt 4PPoE   |
| Power Consumption            | 35W max.   |
| Battery                      | Rechargeable Lithium battery, not user-replaceable                   |
| Environment Conditions       |  |
| Operating Temperature        | -20° to +55° C (vertical installation)                               |
| Storage Temperature          | -30°C to +80°C   |
| Operating / Storage Humidity | 5-85% RH, non-condensing   |
| Protection Class             | IP67 (requires appropriate accessories and cables) - Type: 1, 12, 4x |
| Dimensions and Weights       |  |
| Faceplate LxH                | 534.1x325.6 mm (21.02x 12.81")                                       |
| Depth D                      | 26.5 mm (1.04")  |
| Weight                       | 6.0 Kg   |
| Approvals                    |  |
| CE                           | Radio Equipment Directive 2014/53/EU (RED)                           |
| UL                           | cULus: UL61010-1 / UL61010-2-201                                     |
| UL                           | cULus: Class 1 Div 2   |
| RCM                          | Yes  |



## Ordering Information

| Model      | Part Number   | Description   |
|------------|---------------|---|
| JSmart721M | +JS721GE2U5P1 | HMI 21.5" TFT, 1920x1080, PCAP Touch, PoE Ethernet, Wi-Fi, NFC, JMobile runtime |