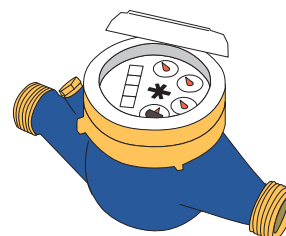


mod.
IWM-PL3

Electronic pulse emitter module
for meters with inductive interface



Compatible water meters



mod. **GMDM-I**
mod. **GMB-I**

The IWM-PL3 is suitable for many applications for remote reading in the residential, commercial and industrial context, acting as an electronic pulse-emitter. It allows the acquisition of the consumption of the counter by third-party systems with a universal interface and integrating advanced counting functions and fraud detections.

The use of an inductive target at the counter excludes the possibility of magnetic fraud and makes the application insensitive to the vibrations of the pipes.

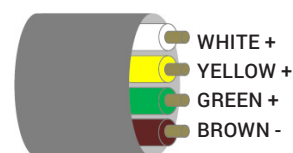
The IWM-PL3 is compatible with all the predisposed multiple jet counters (wet dial and dry dial) and allows:

- Consumption analysis (with incremental and decremental counting), Reverse flow compensation can be activated for an always perfect alignment between the counter and counter clock.
- Checking frauds (cable cut and removal, application of external magnetic field, reverse flow). Magnetic tampering at the counter and removal are recorded and reported to the acquisition system via fraud pulse. The presence of reverse flow can be monitored with a dedicated impulse contact.
- Dedicated dosing function available for industrial applications.
- IP68 protection* allows the use of the module also for meters installed in harsh environments.
- NFC interface allows high flexibility of configuration, allowing setting of the output pulse ratio in total autonomy through smartphone app (available ratio values $K = 1, 5, 10, 25, 50, 100, 250, 500, 1000$), and being able to configure the duration of the output pulse according to the sensitivity of the acquisition system.

Compatible water meters	GMB-I, GMDM-I
Cable length	1.5m (4 conductors)
Output signal	Supply: max 30VDC (100mA) Type: open-collector, Polarized
Pulse output minimum value (K)	1liter
Battery	Non-replaceable lithium, maximum battery life 10 years*
Protection class	IP68**
Weight	120 g
Size (l x p x h, cable excluded)	88 x 70 x 25 mm
Working Temperature	+1° / +55°C
Module programming requirements	Android device (smartphone, tablet, etc.) with an NFC interface and the NFC IWM Config APP freely downloadable from GOOGLE PLAY

* The battery life strongly depends on the working time window, set during the configuration process, and on the environmental conditions.

** IP68: maximum 24 hours of continuous submersion at 1 m depth.



White	Simple counting wire, contact NO Closes every index revolution, independently from the flow direction
Yellow	Fraud wire, NC contact, Opens at the following alarm conditions: - Module removal - Inductive target tampering - Cable cut - Magnetic tampering
Green	Third wire, No contact, it can be assigned one of the following features: - Absolute counting (closes every index revolution during forward flow, with backward flow revolution compensation) - Backward counting (closes every revolution during back flowing) - Dosing (closes every XX liter, with XX freely settable)
Brown	Ground (common wire)