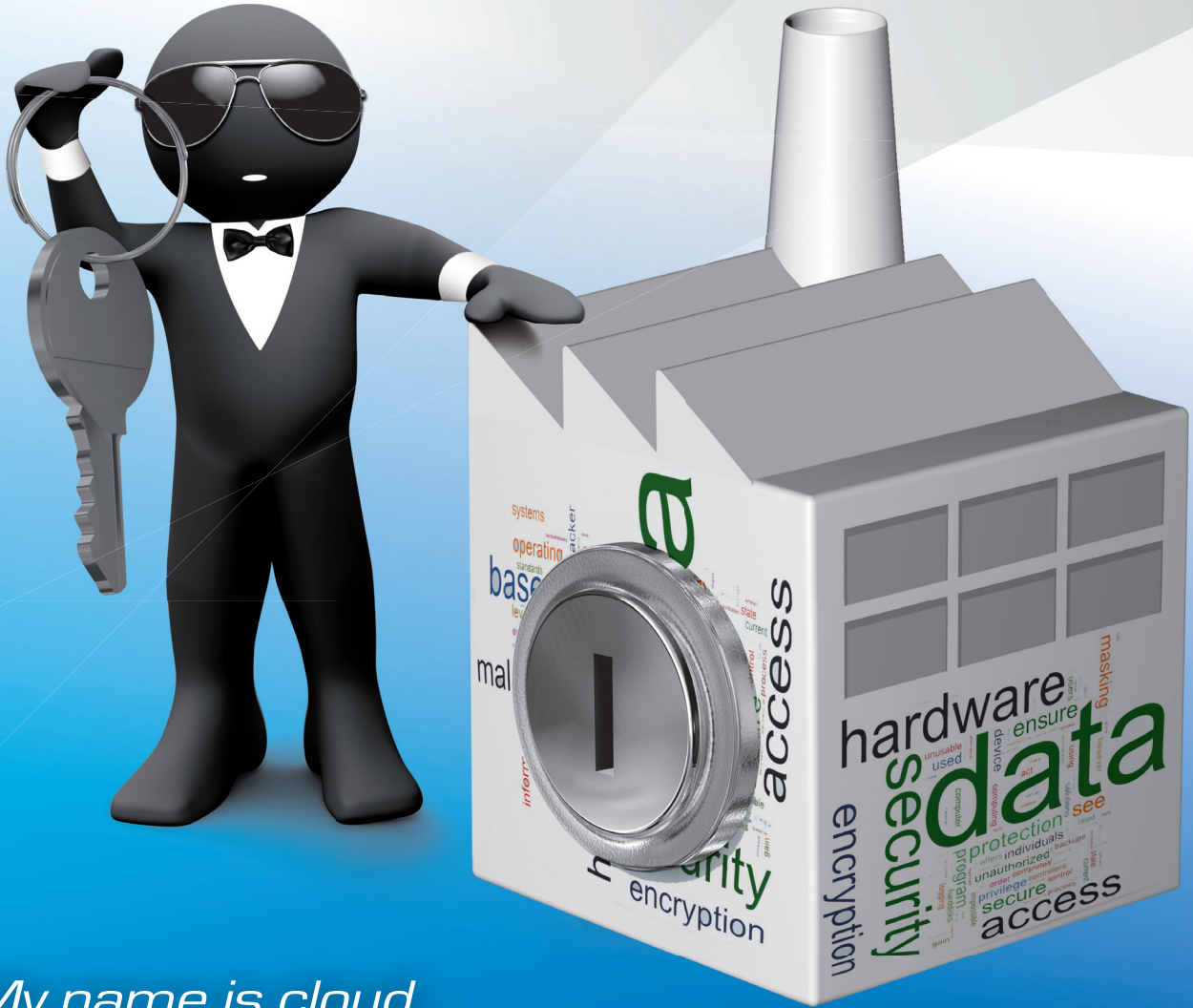


JMcloud



JMcloud Smart Solution for HMI and PLC Remote Control



*My name is cloud...
...JMcloud!*

EXOR
INTERNATIONAL

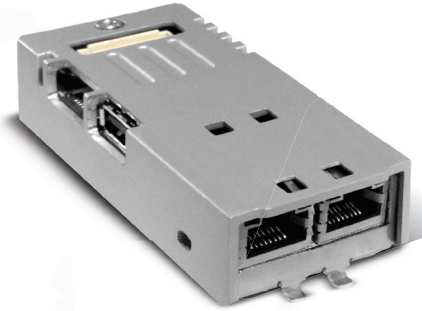
JMcloud



Highlights:

- Designed for remote assistance and data acquisition
- Creates a secure tunnel between installed devices and your computer
- Routing for direct access to remote sub-networks (requires router PLCM07 plug-in)
- Remote desktop for diagnostic of HMI applications
- Support virtual serial communication *
- Integration with JMobile Studio for remote update of OS, JM Runtime and applications
- Communication support for programming remote PLC (Ethernet/serial*)
- Compatible with main PLC brands
- Simple management of users/groups and devices/groups with JMcloud Connect software

PLCM07 Secure Cloud Connector



Features:

- Secure connection for industrial remote connectivity
- Based on JMcloud server technology
- Secure connections based on VPN/SSL (openVPN)
- Firewall-friendly connections
- Simple registration of new devices to the user domain

Software Connectivity Solutions:

- Available on all EXOR Series 500/600 HMI products
- No additional hardware required
- Secure communication based on JMcloud server

PLCM07 Secure Cloud Connector:

- Router plug-in available for all EXOR Series 500/600 HMI products
- Secure communication based on JMcloud server
- Routing to sub-networks
- Configuration using a simple HTML web browser

Technical Data:

- CPU ARM Cortex-A8 1Ghz
- 2x Ethernet 10/100 WAN + LAN
- RAM 512MB DDR3
- Disk 4GB eMMC
- USB Host Port
- microSD card slot
- OS Linux 3.12
- OpenVPN