

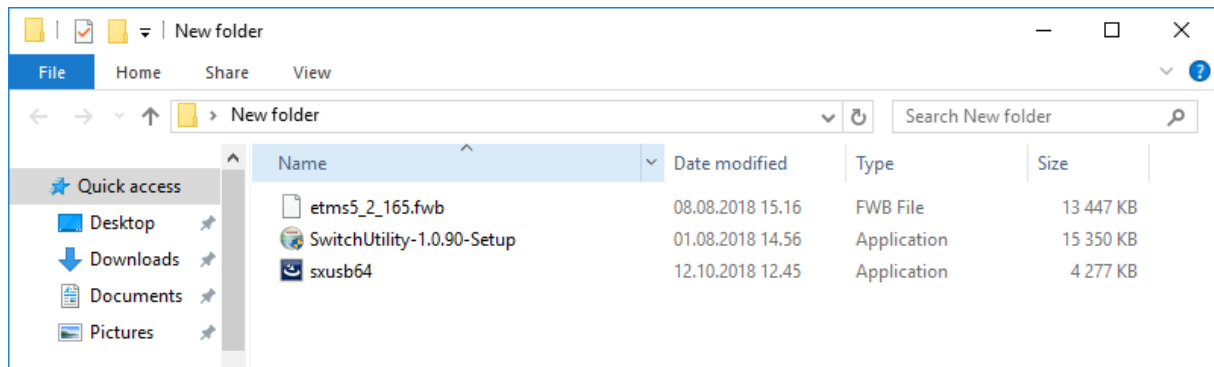
## Downgrade firmware on SLX-8MS-1 rev 3.01 to version 5.2.165

### Prerequisites

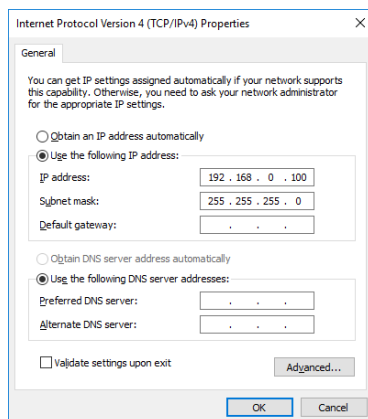
Download the needed files from our download page:

<https://www.autic.no/nedlasting/?pagename=nedlasting&folder=SLX-8MS-1+Firmware&sortdir=A>

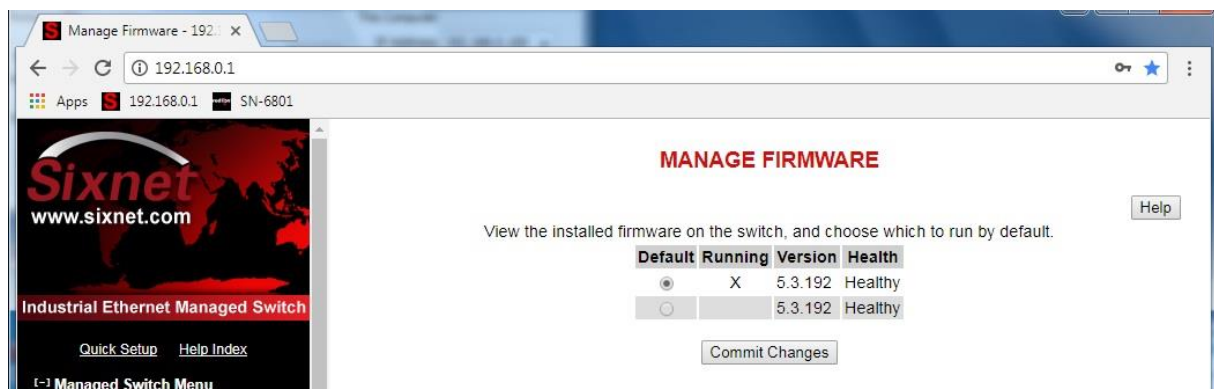
Save the files to a local folder on your computer.



Set the IP address of your computer to the same range as the default IP of the switch, e.g. 192.168.0.100.

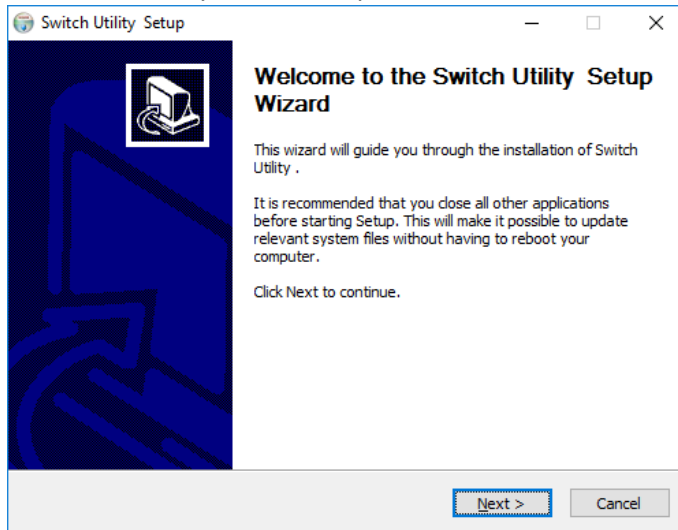


To check the current installed firmware version on your switch, please enter the webGUI (default URL is <http://192.168.0.1>, default login is admin, admin), navigate to Setup > Main Settings > Manage Firmware.



## Install Switch Utility 1.0.90

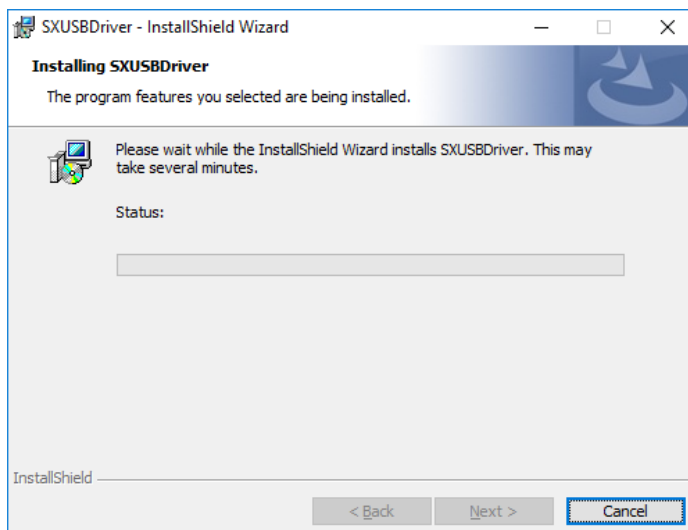
1. Run SwitchUtility-1.0.90-Setup.exe



2. Follow the wizard. Click Next, no changes needed.
3. Click Install when prompted to install Java
4. Finish

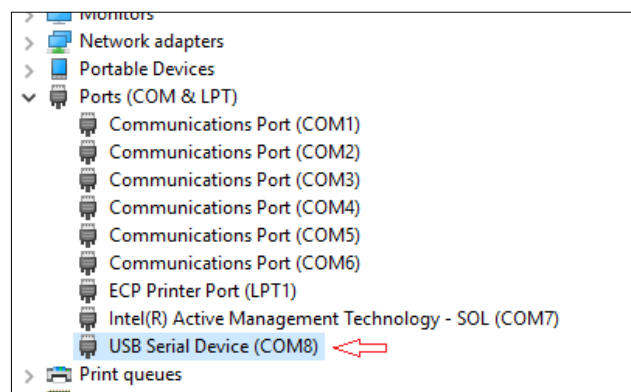
## Install USB driver for USB Serial device

1. Run sxusb64.exe



2. Follow the installation wizard.
3. Finish

When connecting a USB cable to the switch, it will appear as a USB Serial Device in Device manager.  
A standard Male USB A to Male Mini USB B cable can be used.

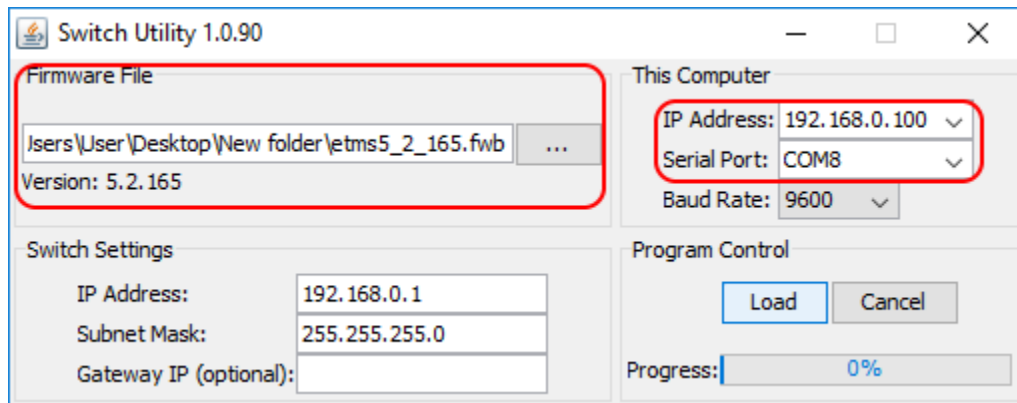


## Downgrade the firmware using Switch Utility

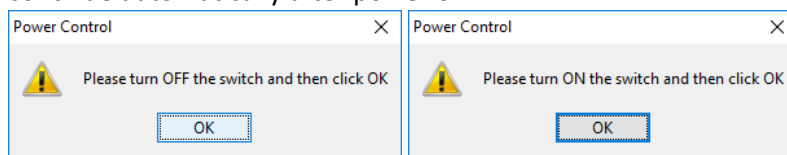
1. Connect the switch to your computer using the USB cable (USB Serial Device). Take note of the COM port in Device Manager.
2. Ensure you have a connection to the switch IP address.
3. Start Switch Utility



4. In the utility, select the Firmware File, and ensure the IP address and Serial Port used is correct.

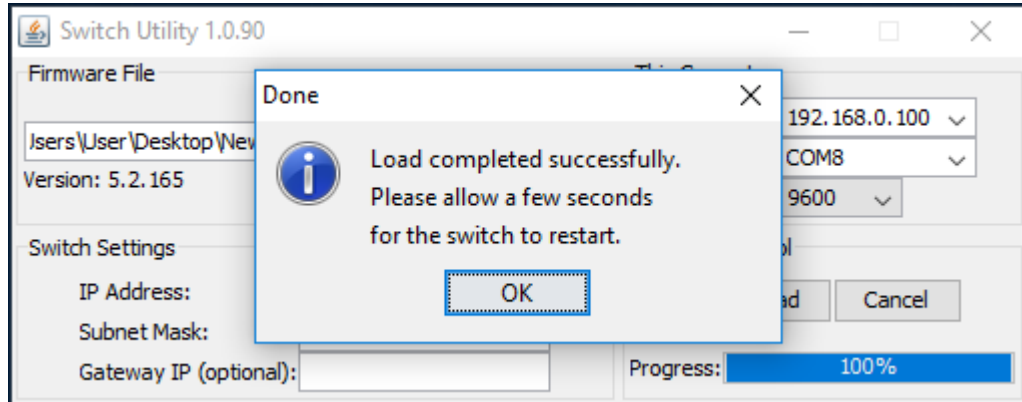


5. Click Load
6. Follow the instruction regarding power the switch off and on. The downgrade will continue automatically after power on.

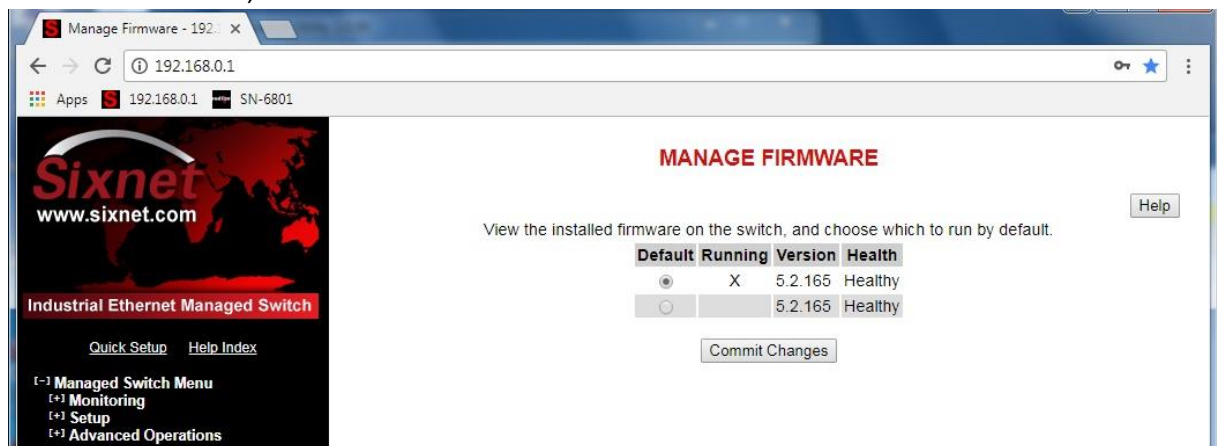


7. If prompted to allow Java to access in the Firewall, click Allow access.

8. When done, click OK.



9. After a minute or so, enter the webGUI to check the new firmware version installed.



Downgrade complete!