



Citect Anywhere

Quick Start Guide

November 2015

Legal Information

DISCLAIMER

Schneider Electric makes no representations or warranties with respect to this manual and, to the maximum extent permitted by law, expressly limits its liability for breach of any warranty that may be implied to the replacement of this manual with another. Further, Schneider Electric reserves the right to revise this publication at any time without incurring an obligation to notify any person of the revision.

Schneider Electric gives no express warranties, guarantees or conditions and to the extent permitted under applicable laws, Schneider Electric disclaims all implied warranties, including any implied warranties of merchantability, fitness for a particular purpose or non-infringement of third parties' intellectual property rights.

Schneider Electric shall not be liable for any direct, indirect or consequential damages or costs of any type arising out of any action taken by you or others related to the Example Projects.

COPYRIGHT

© Copyright 2015 Schneider Electric All rights reserved.

TRADEMARKS

Schneider Electric has made every effort to supply trademark information about company names, products and services mentioned in this manual.

Citect, CitectHMI, Vijeo Citect, Vijeo Citect Lite, PowerSCADA Expert and CitectSCADA are either registered trademarks or trademarks of Schneider Electric.

Pelco, Spectra, Sarix, Endura, are registered trademarks of Pelco, Inc.

IBM, IBM PC and IBM PC AT are registered trademarks of International Business Machines Corporation.

MS-DOS, Windows, Windows NT, Microsoft, and Excel are either registered trademarks or trademarks of Microsoft Corporation in the United States and/or other countries.

DigiBoard, PC/Xi and Com/Xi are trademarks of Digi International Inc.

Novell, Netware and Netware Lite are either registered trademarks or trademarks of Novell, Inc. in the United States and other countries.

dBASE is a trademark of dataBased Intelligence, Inc.

All other brands and products referenced in this document are acknowledged to be the trademarks or registered trademarks of their respective holders.

GENERAL INFORMATION

Some product names used in this manual are used for identification purposes only and may be trademarks of their respective companies.

October 2015 edition for Schneider Electric Citect Anywhere Version 1.0.0.

Manual Revision Version 1.0.

PLEASE NOTE

Electrical equipment should be installed, operated, serviced, and maintained only by qualified personnel. No responsibility is assumed by Schneider Electric for any consequences arising out of the use of this material. © 2015 Schneider Electric. All Rights Reserved.

Validity Note

The present documentation is intended for qualified technical personnel responsible for the implementation, operation and maintenance of the products described. It contains information necessary for the proper use of the products. However, those who wish to make a more "advanced" use of our products may find it necessary to consult our nearest distributor in order to obtain additional information.

The contents of this documentation are not contractual and in no way constitute an extension to, or restriction of, the contractual warranty clauses.

Contact Schneider Electric today at www.schneider-electric.com

Contents

Contents	4
Safety Information	6
Chapter 1: Welcome	8
About Citect Anywhere	8
Chapter 2: Getting Started	9
Licensing	10
Installing and Configuring Citect Anywhere Server	11
Configuring Windows Firewall	13
Configuring Remote Desktop Service	14
Configuring User Access to Vijeo Citect Clients	16
Installing and Configuring Citect Anywhere Secure Gateway	17
Connecting to a Citect Anywhere Server	19
Connecting via the Secure Gateway	21
Connecting Directly to the Citect Anywhere Server	21

Logging on to Vijeo Citect21

Safety Information

Read these instructions carefully, and familiarize yourself with Citect Anywhere before trying to install, operate, or maintain your system. The following special messages may appear throughout this documentation or on the Citect Anywhere application to warn of potential hazards or to call attention to information that clarifies or simplifies a procedure.



This is the safety alert symbol. It is used to alert you to potential personal injury hazards. Obey all safety messages that follow this symbol to avoid possible injury or death.



The addition of this symbol to a Danger or Warning safety label indicates that an electrical hazard exists, which will result in personal injury if the instructions are not followed.



DANGER indicates an imminently hazardous situation which, if not avoided, **will result in death or serious injury.**



WARNING indicates a potentially hazardous situation which, if not avoided, **can result in death or serious injury.**



CAUTION indicates a potentially hazardous situation which, if not avoided, **can result in minor or moderate injury.**

CAUTION
CAUTION , used without the safety alert symbol, indicates a potentially hazardous situation which, if not avoided, can result in equipment damage .

Please Note

Electrical equipment should be installed, operated, serviced, and maintained only by qualified personnel. No responsibility is assumed by Schneider Electric for any consequences arising out of the use of this material.

A qualified person is one who has skills and knowledge related to the construction and operation of electrical equipment and the installation, and has received safety training to recognize and avoid the hazards involved.

Chapter 1: Welcome

Welcome to the Citect Anywhere Quick Start Guide. This guide provides an overview of the steps that need to be carried out so that you can use your Citect Anywhere application to remotely connect to Vijeo Citect clients.

About Citect Anywhere

Citect Anywhere enables you to remotely access a running Vijeo Citect client with a mobile device including tablets and smartphones, and laptop computers. You can view and control the client through a secure web browser without needing to install it on your portable device. You can interact with the Vijeo Citect client from anywhere in real-time.

Chapter 2: Getting Started

To be able to use Citect Anywhere to remotely connect to Vijeo Citect clients, you need to:

1. Install Vijeo Citect and ensure that you are able to connect to the Vijeo Citect client.
2. Install and configure the [Citect Anywhere Server](#) on the computer where Vijeo Citect is installed.
3. Configure [Windows Firewall](#) on the computer where the Citect Anywhere Server is installed.
4. Configure [Windows Remote Desktop Service](#) (RDS) on the computer where the Citect Anywhere Server is installed.
5. Configure [User Access to Vijeo Citect](#) on the computer where the Citect Anywhere Server is installed.
6. Install and configure the [Secure Gateway](#) on another computer.
7. Configure the [connection to the Citect Anywhere Server](#) on the computer where the Secure Gateway is installed.

After you have completed all the steps listed above, you should be able to [connect to a Vijeo Citect client using Citect Anywhere](#).

Note: This guide only provides an overview of the steps. Detailed information for each step is available in different guides, a reference to which is provided at the end of each section. Look for the heading "**For more information...**".

Licensing

Citect Anywhere is licensed for use only with Vijeo Citect v7.20 (SP5a), v7.40 (SP1 and SP2) and v7.50.

In order to run Citect Anywhere, licenses are required for the following:

1. Microsoft Remote Desktop Service (RDS): Every remote desktop session opened with a browser using Citect Anywhere consumes an RDS license. Confirm that the required number of RDS licenses is available to users.
2. Vijeo Citect License(s) - Availability of a Vijeo Citect license is verified every time a user attempts to connect to a Vijeo Citect Client using Citect Anywhere.
3. Citect Anywhere License(s) - Citect Anywhere licenses are available as a bundle of 5, with one license being used per active connection. When connection is established with a Vijeo Citect client, a license is used up. The license becomes available for use again when the session is terminated.

Note: Connection to a Vijeo Citect client is possible only if you have a Vijeo Citect floating license that has been activated.

For more information...

Refer to the following chapters in the Citect Anywhere Server Installation and Configuration Guide:

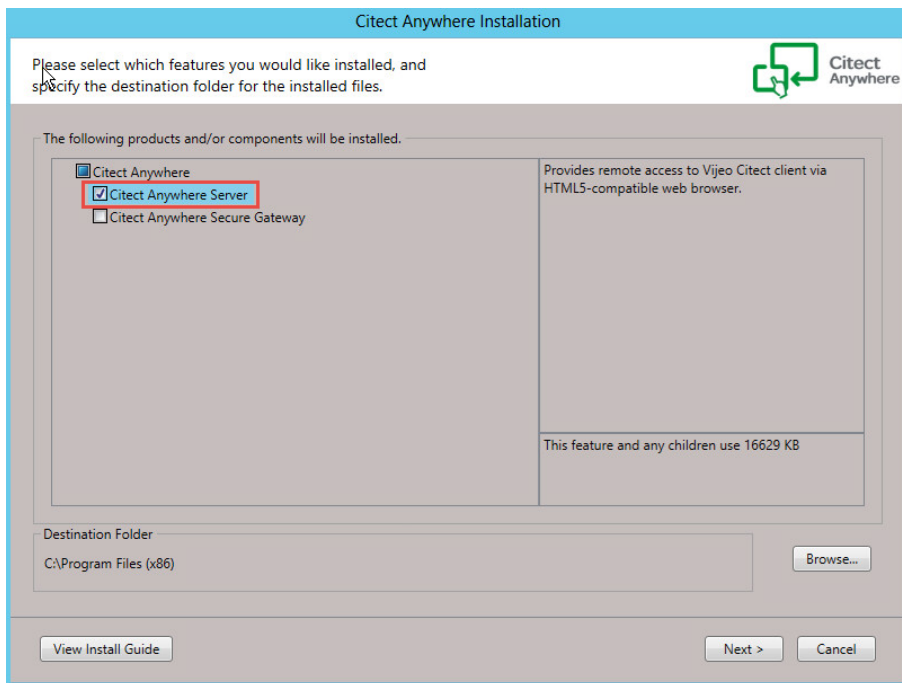
- Overview
- Configuring Citect Anywhere Server

Installing and Configuring Citect Anywhere Server

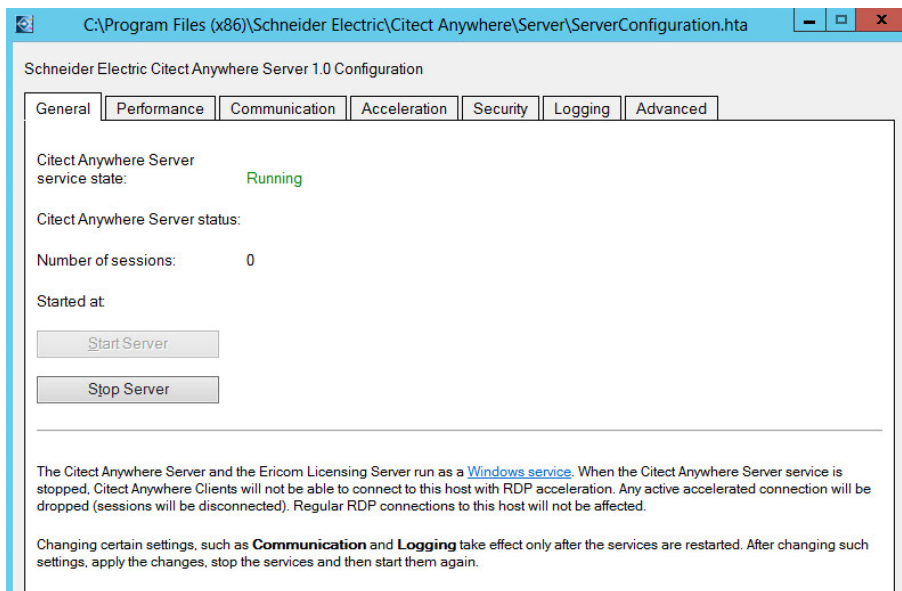
A basic installation of Citect Anywhere Server usually takes about five minutes. Check that all installation prerequisites have been met before starting the installation procedure.

To install Citect Anywhere Server:

1. Run the Citect Anywhere installer file *setup.exe* from your installation media.
2. Select Citect Anywhere Server when presented with the options to select the installation component.



3. Click **Next** through all the dialog boxes, accept the EULA and then click **Finish**.
4. Configure the Citect Anywhere Server using the Configuration Console.



For more information...

Refer to the following chapters in the Citect Anywhere Server Installation and Configuration Guide:

- Installation
- Configuring the Citect Anywhere Server

Configuring Windows Firewall

If the Windows Firewall is enabled on the computer where the Citect Anywhere Server is installed, configure it to enable the Citect Anywhere client connection.

1. Open the **Windows Control Panel** and then **Windows Firewall**
2. Select **Advanced Settings** and select **Inbound Rules**.
3. Click **New Rule**.
4. Select **Port** and click **Next**.
5. Enter the specific port: 8080. Click **Next**.
6. Select to apply the rule on the **Domain**, **Private** and **Public** networks. Click **Next**.
7. Assign a name for the rule.
8. Click **Finish**.

For more information...

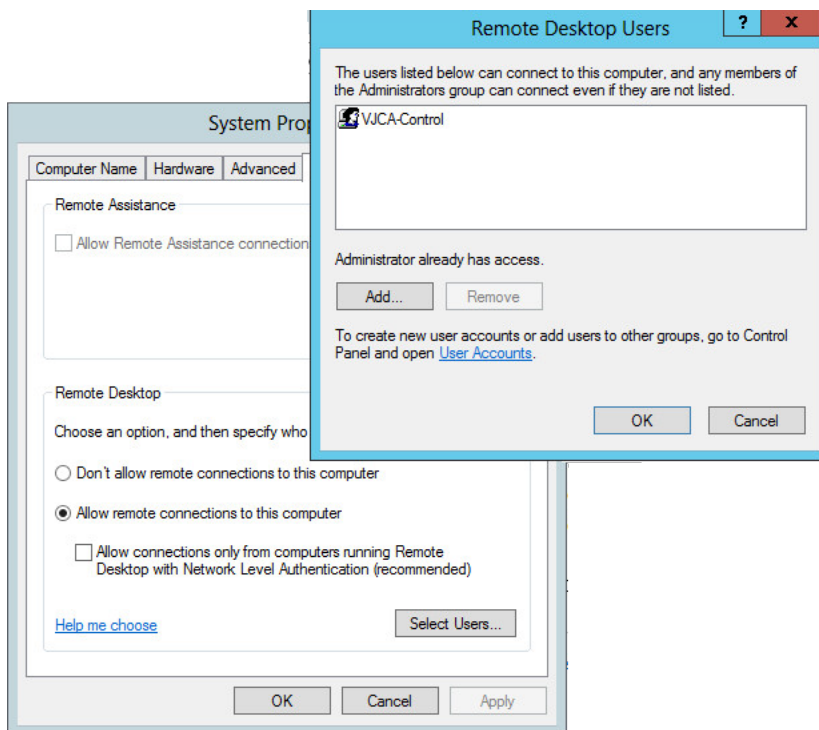
Refer to the following chapter in the Citect Anywhere Installation and Configuration Guide:

- Before You Install

Configuring Remote Desktop Service

Complete these steps on the computer on which the Citect Anywhere Server is installed:

1. Navigate to the Control Panel. Select **System and Security > System**.
2. Select the **Advanced system settings** option on the left. The System Properties dialog is displayed.
3. Click the Remote tab.
4. Select the **Allow remote connections to this computer** option.



5. Click **Select Users**. The Remote Desktop Users dialog is displayed.
6. Add the required users and click **OK**.

Note: For more details about configuring RDS, see the [Remote Desktop Services with Vijeo Citect 2015](#) whitepaper. You need to register with the site before you can access the document.

For more information...

Refer to the following chapters in the Citect Anywhere Installation and Configuration Guide:

- Configuring the Citect Anywhere Server

Configuring User Access to Vijeo Citect Clients

Add users to the Citect Anywhere groups to assign access privileges to the Vijeo Citect client - View-only client or Control client. To do this:

1. Add users to the Windows user groups VjcaView or VjcaControl added by the installer.
2. Navigate to the Control Panel. Select **Administrative Tools > Computer Management**. Locate the Citect Anywhere groups, right-click on the required group.
3. Select **Add to Group** from the context menu and add any users who require access to that group.

For more information...

Refer to the following chapters in the Citect Anywhere Installation and Configuration Guide:

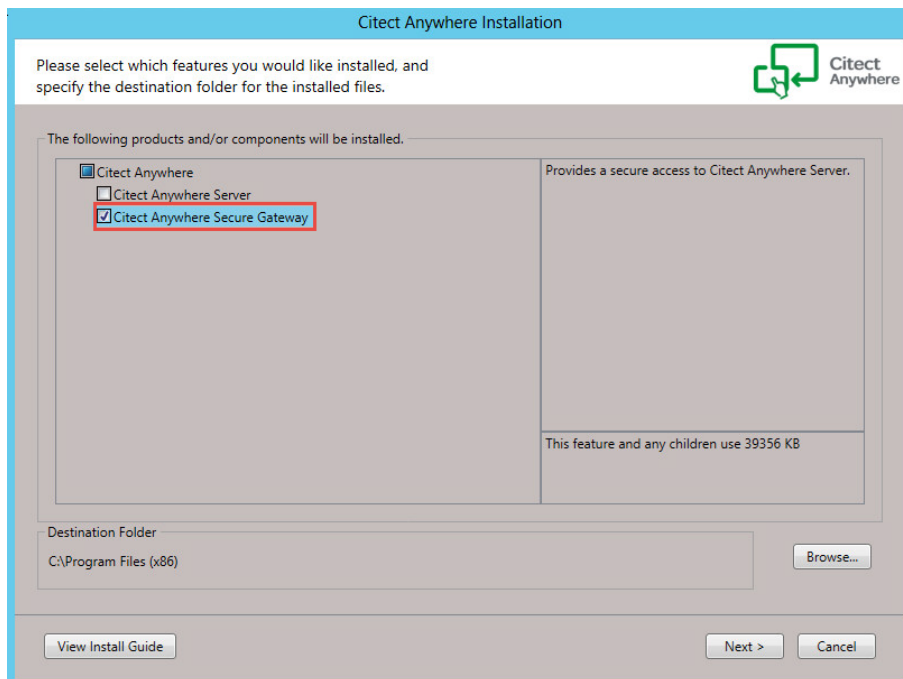
- Configuring Citect Anywhere Server

Installing and Configuring Citect Anywhere Secure Gateway

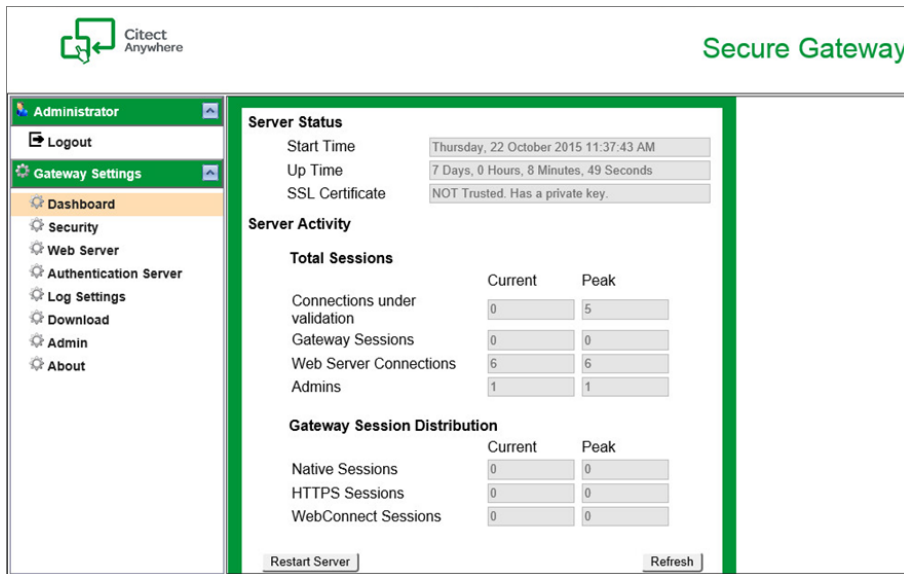
A basic installation of Citect Anywhere Secure Gateway usually takes about five minutes, similar to the Citect Anywhere Server. Check that all installation prerequisites have been met before starting the installation procedure.

To install Citect Anywhere Secure Gateway:

1. Run the Citect Anywhere installer file *setup.exe* from your installation media.
2. Select Citect Anywhere Secure Gateway when presented with the options to select the installation component.



3. Click **Next** through all the dialog boxes, accept the EULA and then click **Finish**.
4. Configure the Citect Anywhere Server using the Configuration Portal.



For more information...

Refer to the following chapters in the Citect Anywhere Secure Gateway Installation and Configuration Guide:

- Installation
- Configuring the Secure Gateway

Connecting to a Citect Anywhere Server

The Secure Gateway needs to be configured to point to your Citect Anywhere Server in order to use SSL for accessing Vijeo Citect. To do this:

1. Edit the *config.js* file located on the computer where the Secure Gateway is installed. This file is located in the *<Program Files>\Schneider Electric\Citect Anywhere\Citect Anywhere Secure Gateway\WebServer\CitectAnywhere* folder.

2. Find the commented line:

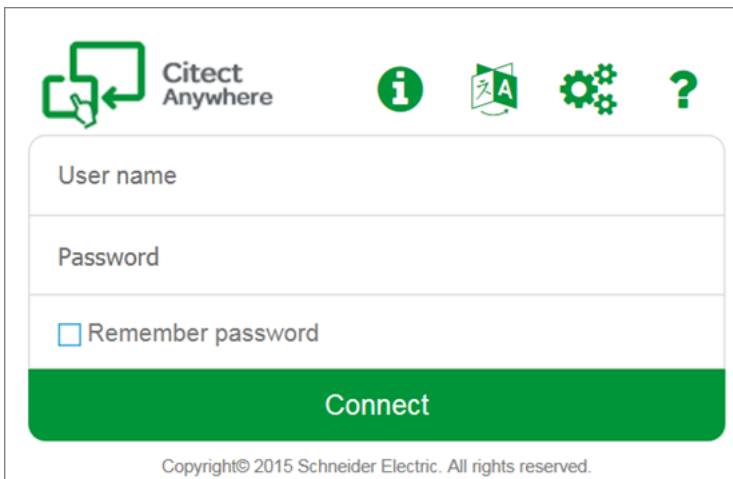
```
//      address:"", // Address of server
```

3. Uncomment the line by removing the initial "//".
4. With the quotation marks, type the name or IP address of the computer on which the Citect Anywhere Server is installed.

For example:

```
address: "VD-CA-SRV", // Address of server
```

Access to the Citect Anywhere Server is routed through the Secure Gateway node. When you navigate to the *https://<Name or IP Address of computer on which Secure Gateway is installed> or IP Address>/*, the following page appears:



Citect Anywhere

User name

Password

Remember password

Connect

Copyright © 2015 Schneider Electric. All rights reserved.

The setup steps completed above will route the connection through to the Citect Anywhere Server using the supplied credentials.

Note: A full page refresh and clearing cookies on all clients are required each time the **Address** property in the *config.js* is changed

For more information...

Refer to the following chapters in the Citect Anywhere Secure Gateway Installation and Configuration Guide:

- Post-Installation

Connecting to a Vijeo Citect Client

Connection to a Vijeo Citect client is achieved through a Citect Anywhere web client in the following ways:

- Through the Secure Gateway
- Directly to the Citect Anywhere Server

Connecting via the Secure Gateway

Open an HTML5 compliant browser and point it to the URL of the computer on which the Secure Gateway is installed:

https://server:port/

Connecting Directly to the Citect Anywhere Server

If the web client is on the SCADA network, you can connect directly to the Citect Anywhere Server. Open an HTML5 compliant browser and point it to the URL of the Citect Anywhere Server:

http://computer name or IP Address:8080/

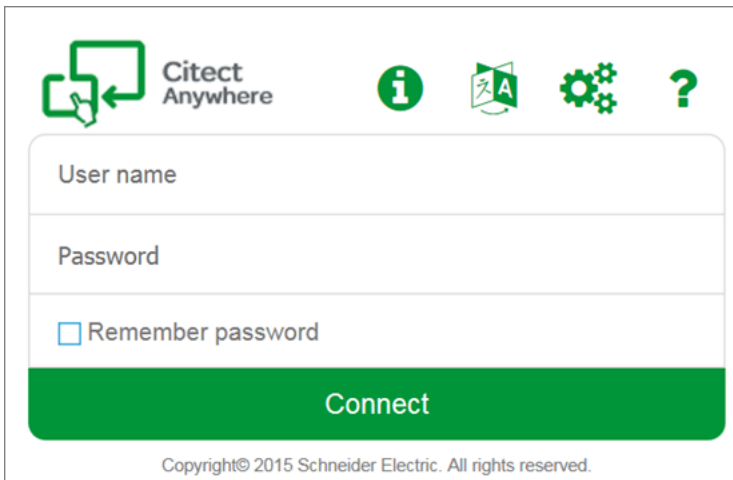
This URL will automatically redirect to the full URL:

http://computer name:8080/CitectAnywhere/start.html

Specify the Citect Anywhere Server port in the URL to tell the browser to use the web server that is built-in to the Citect Anywhere Server service. HTTPS may also be used.

Logging on to Vijeo Citect

1. After the Citect Anywhere Server web page appears, enter the user credentials. This user needs to belong to the VjcaView or VjcaControl group.



The screenshot shows the Citect Anywhere login page. At the top left is the Citect Anywhere logo. To its right are four icons: an information icon (i), a document icon (A), a settings icon (gears), and a help icon (?). Below these icons are three input fields: 'User name', 'Password', and a checkbox labeled 'Remember password'. A large green button labeled 'Connect' is positioned below the input fields. At the bottom of the page, the text reads 'Copyright © 2015 Schneider Electric. All rights reserved.'

2. Once you have entered your credentials, click **Connect**.

The connection dialog appears momentarily while the web browser connects to the RDP host where the Citect Anywhere Server is installed.

Vijeo Citect client is launched at the remote node.

Note: Once connected, closing the Vijeo Citect client will log off and end the session. Closing the browser will close the Citect client, log off and end the Citect Anywhere session.

For more information...

Refer to the following chapters in the Citect Anywhere Web Client User Guide:

- Using Schneider Electric Citect Anywhere
- Viewing a Vijeo Citect Client with Citect Anywhere