

NR500 Series Industrial Cellular VPN Router

Application Note 028

SSH With Public Key

Version: V1.0.0
Date: 2018/10/08
Status: Confidential



Directory

1. Introduction.....	3
1.1 Overview.....	3
1.2 Compatibility.....	3
1.3 Version.....	3
1.4 Corrections.....	3
2. Configuration.....	4
2.1 Router Configuration.....	4
2.2 Public/Private Key Generated.....	4
3. Test.....	6

1. Introduction

1.1 Overview

This document contains information regarding the configuration and use of SSH with Public Key.

This guide has been written for use by technically competent personnel with a good understanding of the communications technologies used in the product, and of the requirements for their specific application.

1.2 Compatibility

This application note applies to:

Models Shown: NR500 series.

Firmware Version: V1.0.0 (930.3) or newer

Other Compatible Models: None

1.3 Version

Updates between document versions are cumulative. Therefore, the latest document will include all the content of previous versions.

Release Date	Doc. Version	Firmware Version	Change Description
2018/10/08	V1.0.0	V1.0.0(930.3)	First released

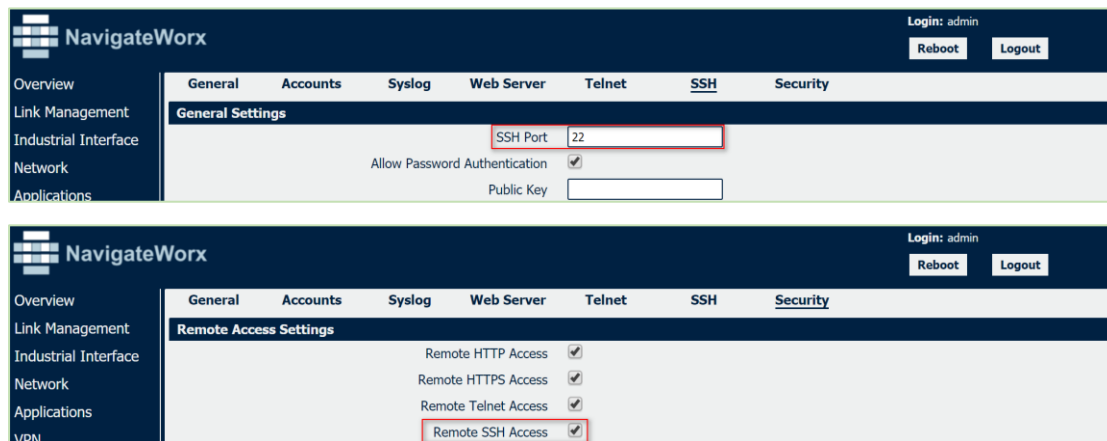
1.4 Corrections

Appreciate for corrections or rectifications to this application note, and if any request for new application notes please email to: support@navigateworx.com

2. Configuration

2.1 Router Configuration

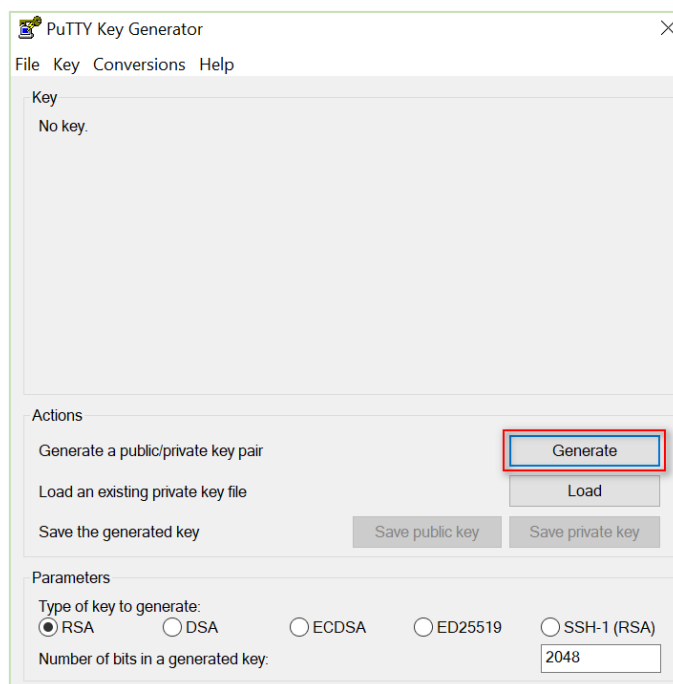
1. Go to **Maintenance>System>SSH/Security**, to specify the SSH port and enable Remote SSH Access, like below:



2. Click Save>Apply.

2.2 Public/Private Key Generated

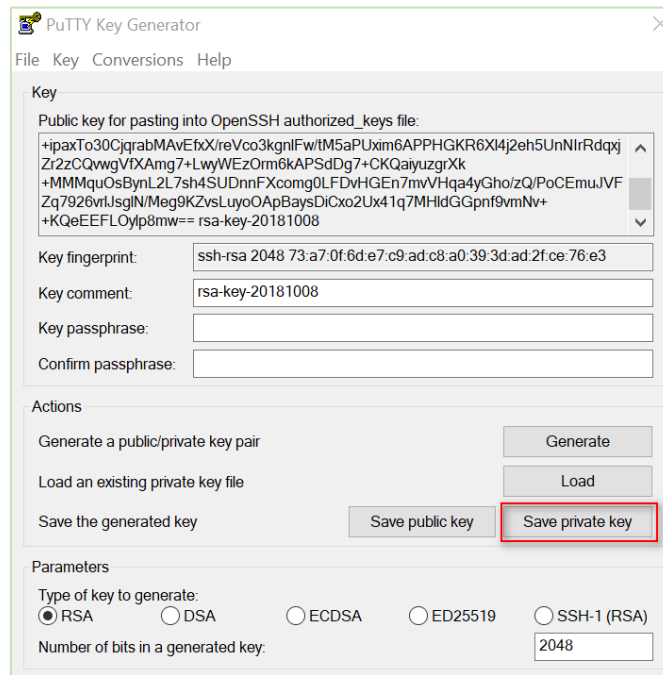
1. Run the software “puttygen.exe” to build the public key, like below:



2. Copy the public key string to Maintenance>System>SSH, click Save>Apply.



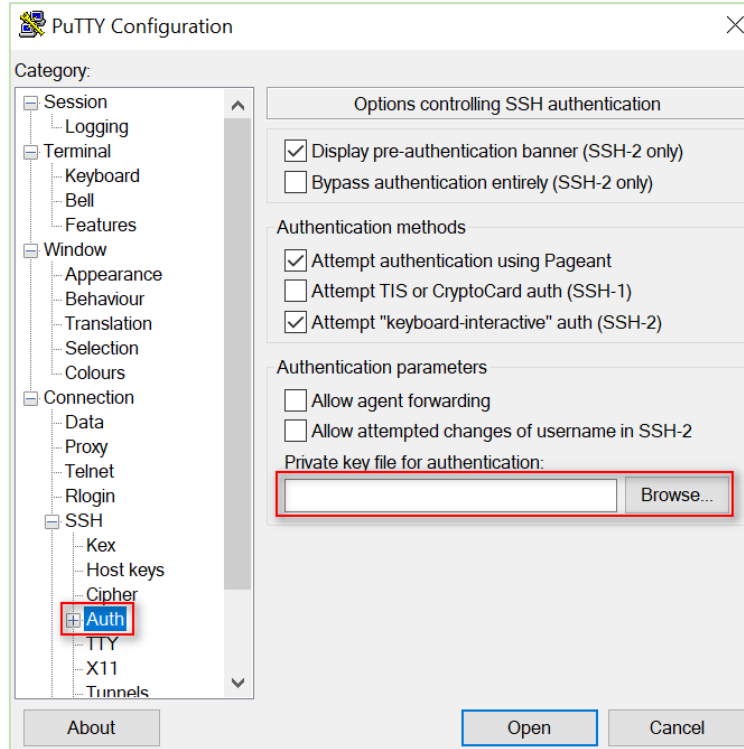
3. Save the Private Key, like below:



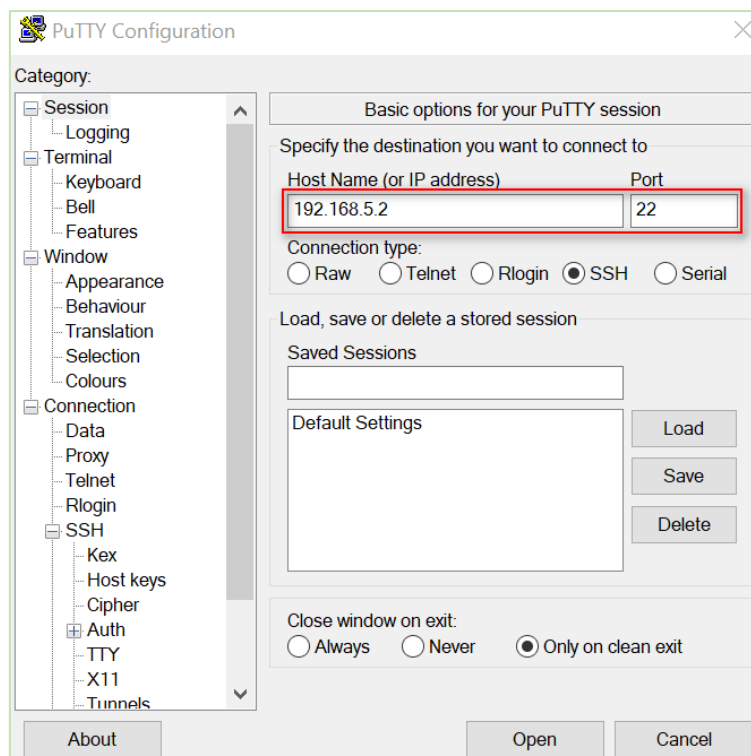
Note: we need to import the private key to the SSH tool, so the it can SSH to the router successfully.

3. Test

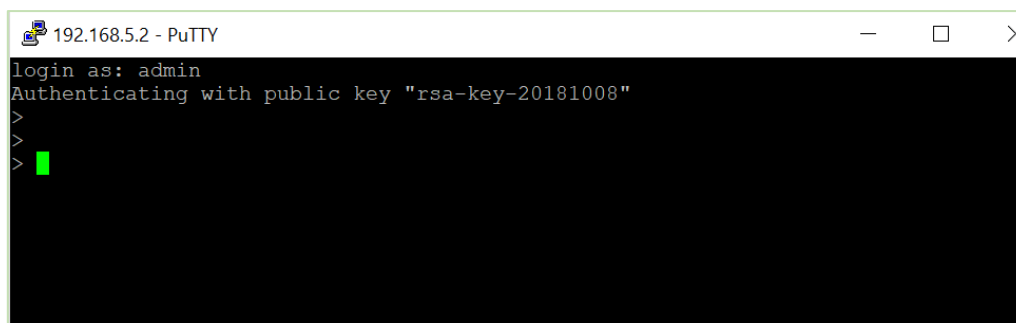
1. Enable SSH tool "putty.exe" and import the private key, like below:



2. Enter the host name and port to SSH to the router.



3. Test successfully.



```
192.168.5.2 - PuTTY
login as: admin
Authenticating with public key "rsa-key-20181008"
>
>
> █
```