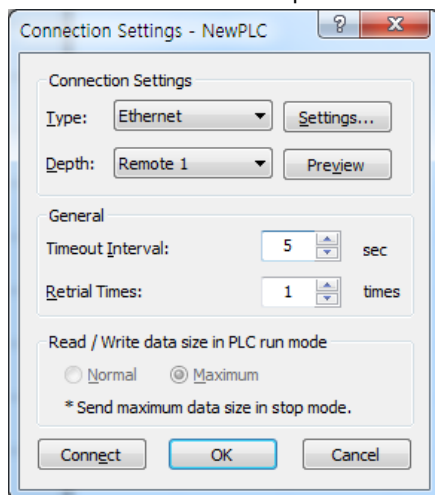


1. Improvements and additions

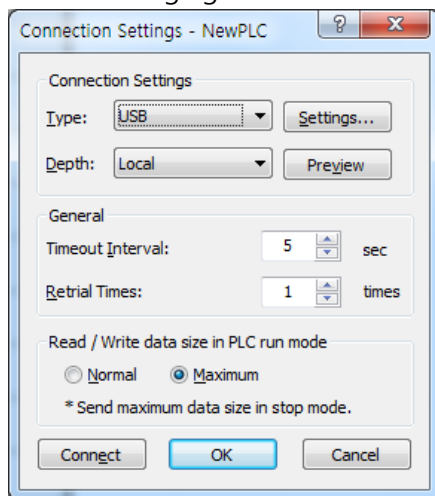
1) Improved to change the type locally when changing the connection method to USB

In the connection setting, the connection method is changed to the connection method other than USB, and then the connection type is automatically changed locally when changing to USB again.

<Ethernet remote 1 step selection>



<When changing to USB>

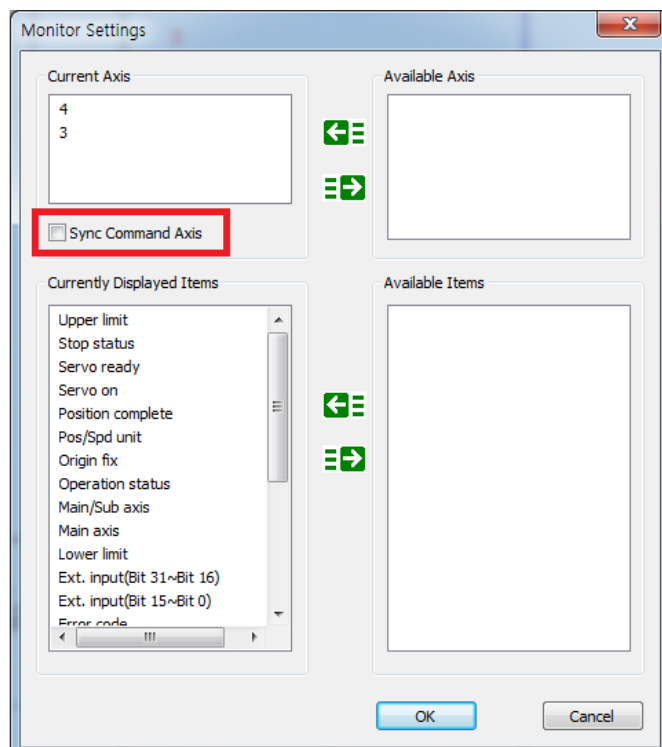


2) Improved to view multiple axes simultaneously in axis status monitor window

The axis status monitor window which was able to monitor only one axis has been improved so that multiple axes can be viewed at the same time.

Status Monitor		
Status/Axis	3	4
Axis type	Virtual axis	Virtual axis
Connected slave	Connected Slave(None)	Connected Slave(None)
Servo ready	ON	ON
Servo on	OFF	OFF
Pos/Spd unit	pls,pls/s	pls,pls/s
Command position	5.921995e-1 90	5.851104e-1 90
Command speed	5.921995e-1 90	5.851104e-1 90
Command torque	5.921995e-1 90	5.851104e-1 90
Current position	5.921995e-1 90	5.851104e-1 90
Current speed	5.921995e-1 90	5.851104e-1 90
Current torque	5.921995e-1 90	5.851104e-1 90
Error code	0	0
Main axis	3	4
Main/Sub axis	Master	Master
Operation status		
Position complete		
Origin fix		
Control pattern		
Stop status		
Upper limit		
Lower limit		
Ext. input(Bit 15~Bit 0)	0000 0000 0000 0000	0000 0000 0000 0000
Ext. input(Bit 31~Bit 16)	0000 0000 0000 0000	0000 0000 0000 0000

In addition, when the [Sync Command Axis] button in the monitor item setting window is activated, a function to emphasize the axis being controlled in the current motion command window has been added.



Status Monitor

Status/Axis	3	4
Axis type	Virtual axis	Virtual axis
Connected slave	Connected Slave(None)	Connected Slave(None)
Servo ready	ON	ON
Servo on	OFF	OFF
Pos/Spd unit	pls,pls/s	pls,pls/s
Command position	5.921995e-1 90	5.926002e-1 90
Command speed	5.921995e-1 90	5.926002e-1 90
Command torque	5.921995e-1 90	5.926002e-1 90
Current position	5.921995e-1 90	5.926002e-1 90
Current speed	5.921995e-1 90	5.926002e-1 90
Current torque	5.921995e-1 90	5.926002e-1 90
Error code	0	0

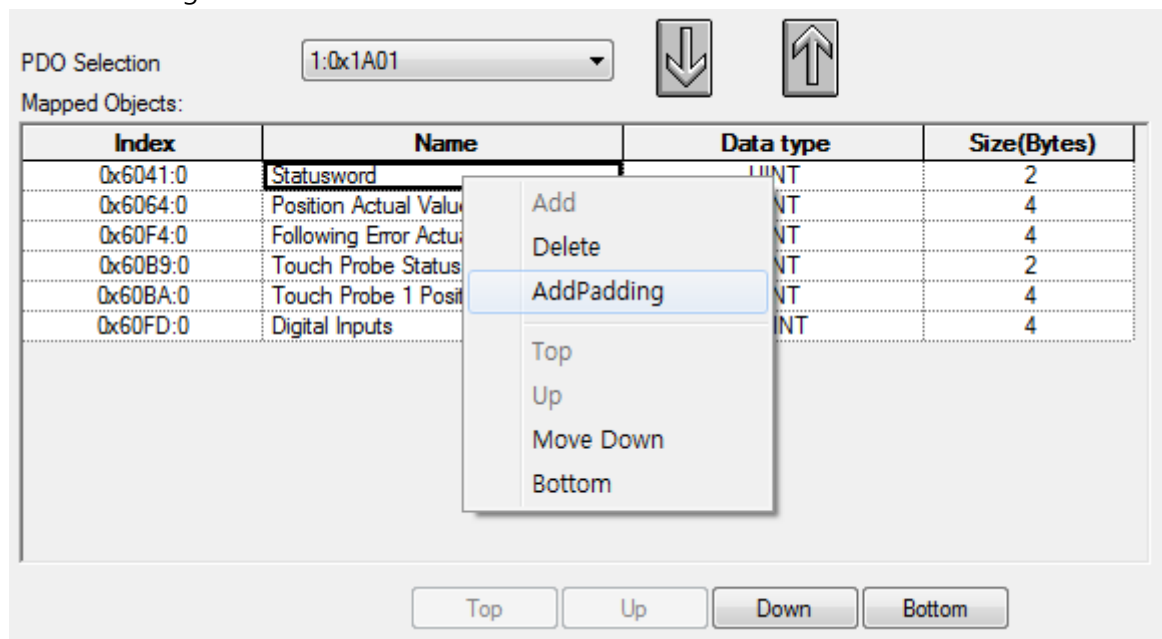
Motion Command

CMD.Axis: Axis 3

Error Reset	Item	Rst. Axis Error	Run
Direct Start	Pos.	0 pls	Run
	Spd.	0 pls/s	
	Accel.	0 pls/s ²	
	Decel.	0 pls/s ²	
	Jerk	0 pls/s ³	
	Coord.	ABS	
	Dir.	0: none	
Dec. Stop	Dec.	0 pls/s ²	Run
	Jerk	0 pls/s ³	
Pos. Preset	Pos.	0 pls	Run
Enc. Preset	Type	ENC1	Run
	Pos.	0 pls	
Start JOG	<< < > >>		
Stop JOG			

- 3) XGI type The device which can allocate memory in the global variable and local variable list has been improved to the flag area (F, L, K, U device) as well. (Existing I, Q, M, R, W only)
- 4) In case of XGK auto assignment project, the default value of timer variable is changed to 100 ms. (The default value is 0.1ms)
- 5) Added XGB-XEMH2 and XGB-XEMHP models
Support for IEC type XGB-XBMH2 and XGB-XBMHP has been added.
- 6) S/W upper limit parameter input range has been changed of XMC model
The S/W upper limit input range of motion axis parameter has been changed from exceed S/W limit value(>) to over S/W limit value(≥)
- 7) Added XG-PM initialization function
Added the function to reset the settings of XG-PM. You can use this function by using shortcut icon.
- 8) Change motion flag classification
The [EtherCAT Master] and [EtherCAT Slave] items have been added to the flag classification items, and the flag items in other categories such as [Common to Motion] have been classified according to functions.

- 9) Add motion axis parameter
XMC In the axis parameter of motion model [The sync method depending on the direction] has been added.
- 10) Added [Add Padding] function to edit PDO setting item of XMC module.
Data padding can be added from a minimum of 1 bit to a maximum of 64 bits as a function to align the PDO communication data.

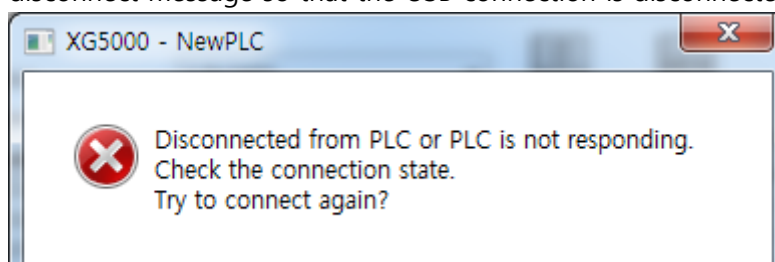


- 11) The following command has been added.
✓ XECS, XEMH2, XEMHP : SPA (Solar Position Algorithm)

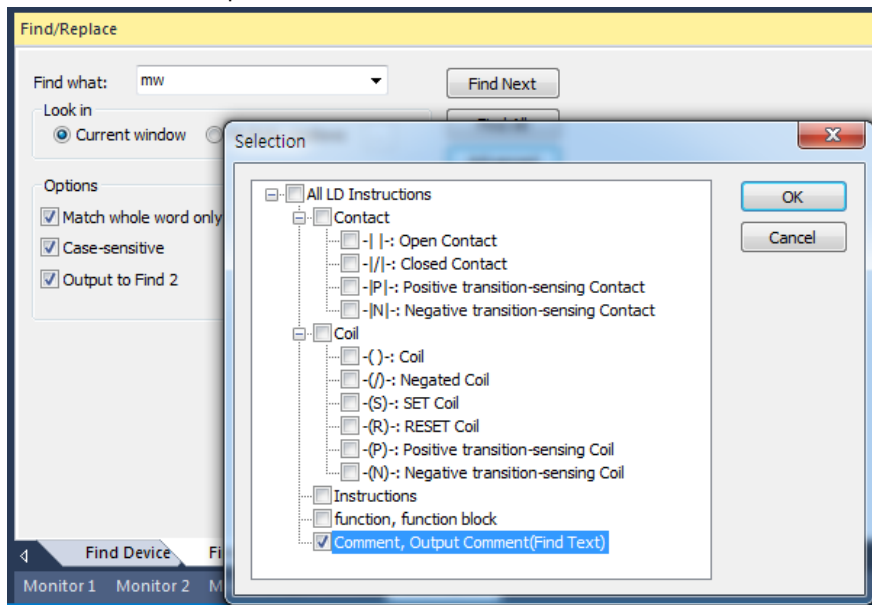
2. Error correction

- 1) Online menu abnormal operation in XG5000 after returning to PC power save mode from USB connection

When the PC enters the power saving mode, XG5000 has been changed to generate a disconnect message so that the USB connection is disconnected.



- 2) When XGK auto assignment project, ladder program can not find/replace text in comment and output comment.



- 3) When the version of XGL-EFMT module does not support OPC UA function, "no module" message is displayed when Read or Open From PLC. (OPC UA functionality available from version 7.00 or later to version 7.99 only)
- 4) In the XGK project, correcting error that variables/comment of T and C devices do not change when performing device find/replace in multiple windows.